

+ Datasheet Accessories



Content

Filter Caps	3
Mounting Flanges	7
LC Displays	11
Power Supply Unit	11
Replacement Sensing Elements	12
Sampling Cells	12
Drip Water Protection	15
Protection Caps	16
Radiation Shields.....	17
Mounting and Connection Elements.....	20
Reference Probes.....	23
Interface Cables	24
Converters and Configuration Adapters	26
Connectors	30
Connection Cables.....	32

Filter Caps

Humidity and Dew Point Sensors with Probe Diameter 12 mm (0.47")

The selection of the correct filter for the respective application is essential for the long-term flawless operation of the sensor. If you need assistance, please contact your local E+E representative: www.epluse.com.

Membrane, Polycarbonate Body



Features

- Very good protection against fine dust
- Temperature range:
-40...+80 °C (-40...+176 °F)
- Response time $t_{10/90}$: 15 s

Construction

- Body: PC (Polycarbonate)
- Filter: PTFE (Polytetrafluoroethylene) -Membran
- Pore size: 1 μ m
- Length: 34 mm (1.34")

Applications

- Building automation
- Dusty environment

Order code

- HA010101
(light grey)
- HA010118
(black)

Metal Grid, Polycarbonate Body



Features

- For high RH/condensing environment, low mechanical stress and low pollution level
- Temperature range:
-40...+120 °C (-40...+248 °F)
- Response time $t_{10/90}$: 15 s

Construction

- Body: PC (Polycarbonate)
- Filter: Stainless steel wire mesh
- Pore size: 30 μ m
- Length: 34 mm (1.34")

Applications

- Climate control
- Dryers and humidifiers
- HVAC

Order code

- HA010106
(light grey)
- HA010119
(black)

Stainless Steel Sintered



Features

- For high mechanical stress and strong pollution
- Temperature range:
-40...+180 °C (-40...+356 °F)
- Response time $t_{10/90}$: 30 s

Construction

- Material: Stainless steel sintered
- Pore size: 10 μ m
- Length: 33 mm (1.30")

Applications

- Industrial process control
- Agriculture
- Life stock barns

Order code

- HA010103
(plastic probes)
- HA010117
(metal probes)

PTFE (Polytetrafluoroethylene)



Features

- For very dirty, oily environment
- Temperature range:
-40...+180 °C (-40...+356 °F)
- Response time $t_{10/90}$: 14 s

Construction

- Material: PTFE sintered
- Pore size: 50 μ m
- Length: 33 mm (1.30")

Order code

HA010105

Applications

- Industrial process control
- Chemical industry
- Very polluted environment

Metal Grid for EE08 only, Polycarbonate Body



Features

- For high RH/condensing environment
- Low mechanical stress
- Low pollution level
- Temperature range:
-40...+120 °C (-40...+248 °F)
- Response time $t_{10/90}$: 15 s

Construction

- Body: PC (Polycarbonate)
- Filter: Stainless steel wire mesh
- Pore size: 30 μ m
- Length: 25 mm (1")

Order code

HA010113

Applications

- Meteorology, outdoor
- Climate control

Stainless Steel Grid, Stainless Steel Body, up to 180 °C (356 °F)



Features

- For high RH/condensing environment
- Low mechanical stress
- Low pollution level
- Temperature range:
-40...+180 °C (-40...+356 °F)
- Response time $t_{10/90}$: 15 s

Construction

- Body: Stainless steel
- Filter: Stainless steel wire mesh
- Pore size: 30 μ m
- Length: 39 mm (1.54")

Order code

HA010109

Applications

- Industrial process control
- Clean rooms

PTFE (Polytetrafluoroethylene), Stainless Steel Body



Construction

- Body: Stainless steel
- Filter: PTFE membrane, replaceable
- Pore size: 2 µm
- Length: 39 mm (1.54")

Order code

- HA010114**
(complete filter)
- HA010114ME**
(PTFE membrane)

Features

- For high RH / condensing environment
- High pollution level
- Temperature range: -40...+180 °C (-40...+356 °F)
- Response time $t_{10/90}$: 14 s
- Water ingress pressure >0.5 bar (>7.25 psi)

Applications

- For EE260, HTS801-T28 in:
 - Meteorology, outdoor
 - Climate control
 - Highly humid environments

Catalytic for H₂O₂ (Hydrogen Peroxide) Sterilisation



Construction

- Material: PTFE (Polytetrafluoroethylene) sintered
- Pore size: 50 µm
- Length: 33 mm (1.30")

Order code

- HA010115**

Features

- Catalytic filter for H₂O₂ environment
- Temperature range: -40...+180 °C (-40...+356 °F)
- Response time $t_{10/90}$: 14 s

Applications

- Pharma
- Biotech
- Sterilization with H₂O₂

Moisture in Oil Sensors with Probe Diameter 12 mm (0.47")

Stainless Steel, for Flow <1 m/s (3.3 ft/s)



Construction

- Material: Stainless steel
- Perforation: Ø3 mm (0.12")
- Length: 32 mm (1.26")

Order code

- HA010110**

Features

- For moisture in oil measuring devices
- For flow <1 m/s (3.3 ft/s)

Applications

- Hydraulic, lubrication and isolation oil monitoring

Stainless steel, for Flow >1 m/s (3.3 ft/s)



Construction

- Material: Stainless steel
- Perforation: Ø1.5 mm (0.06")
- Length: 32 mm (1.26")

Order code

- HA010111**

Features

- For moisture in oil measuring devices
- For flow >1 m/s (3.3 ft/s)

Applications

- Hydraulic, lubrication and isolation oil monitoring

EE872 CO₂ Probe with Ø25 mm (0.98")

PTFE (Polytetrafluoroethylene)



Features

- Standard filter for EE872 CO₂ probe
- Temperature range: -40...+60 °C (-40...+140 °F)

Construction

- Material: PTFE sintered
- Pore size: 50 µm
- Length: 62 mm (2.44")

Order code

HA010123

Applications

- Greenhouses
- Agriculture
- Outdoor CO₂ monitoring

Catalytic for H₂O₂ (Hydrogen Peroxide) Sterilisation



Features

- Catalytic filter for EE872 CO₂ probe in H₂O₂ environment
- Temperature range: -40...+60 °C (-40...+140 °F)

Construction

- Material: PTFE (Polytetrafluoroethylene) sintered
- Pore size: 50 µm
- Length: 62 mm (2.44")

Order code

HA010124

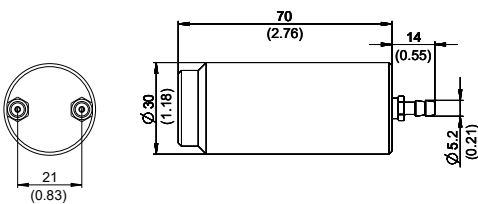
Applications

- Pharma
- Biotech
- Sterilization with H₂O₂

Calibration Adapter/Protection Cap



Dimensions in mm (inch)



Construction

- Material: PET (Polyethyleneterephthalate)

Order code

HA010785

Description

- Inner diameter of the attachable hose 5 mm (0.2")

Applications

- Calibration
- Sensor protection

Features

- Temperature range: -40...+60 °C (-40...+140 °F)

Mounting Flanges

Plastic Flange, Light Grey, Ø12 mm (0.47")



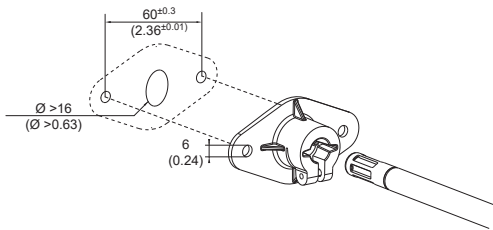
Suitable for

- All probes with diameter 12 mm (0.47")

Order code

HA010202

Dimensions in mm (inch)



Features

- Temperature range: -40...+80 °C (-40...+176 °F)
- Material: PA6-GF30 (Polyamide - glass fiber)

Plastic Flange, Black, Ø12 mm (0.47")



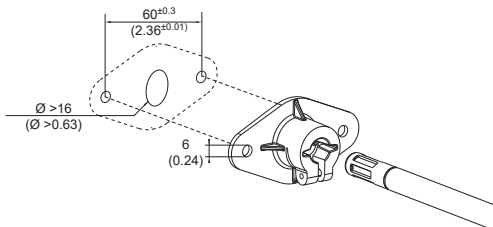
Suitable for

- All probes with diameter 12 mm (0.47")

Order code

HA010214

Dimensions in mm (inch)



Features

- Temperature range: -40...+80 °C (-40...+176 °F)
- Material: PA6-GF30 (Polyamide - glass fiber)

Plastic Flange, Ø6 mm (0.24")



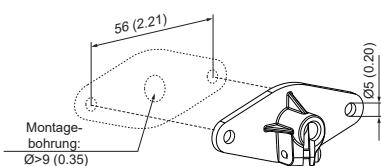
Suitable for

- All probes with diameter 6 mm (0.24")

Order code

HA401101

Dimensions in mm (inch)



Features

- Temperature range: -40...+80 °C (-40...+176 °F)
- Material: PC-GF10 (Polycarbonate - glass fiber)

Stainless Steel Flange Ø12 mm (0.47")



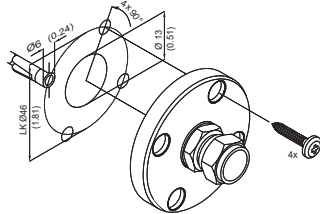
Suitable for

- All probes with diameter 12 mm (0.47")

Order code

HA010201

Dimensions in mm (inch)



Features

- Material: Stainless steel 1.4404

Stainless Steel Flange Ø25 mm (0.98")



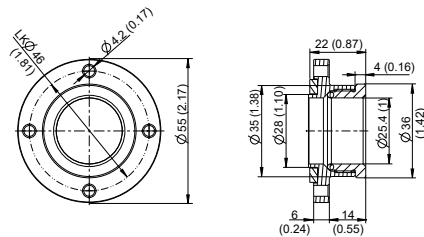
Suitable for

- EE872

Order code

HA010226

Dimensions in mm (inch)



Features

- Material: Stainless steel 1.4404

Stainless Steel Flange Ø6 mm (0.24") / Ø8 mm (0.32")



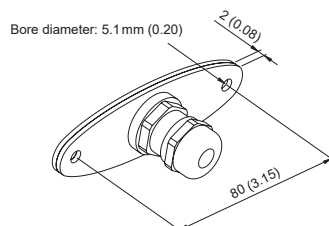
Suitable for

- All probes with diameter 6 mm (0.24")/8 mm (0.32")

Order code

HA010207

Dimensions in mm (inch)



Features

- Material: Stainless steel 1.4404

Duct Mounting Kit



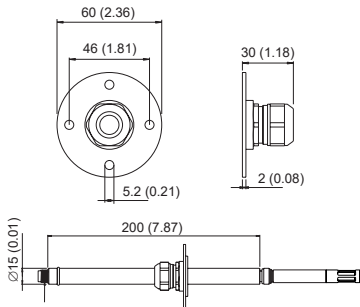
Suitable for

- EE07

Order code

HA010209

Dimensions in mm (inch)



Wall Mounting Clip Ø12 mm (0.47")



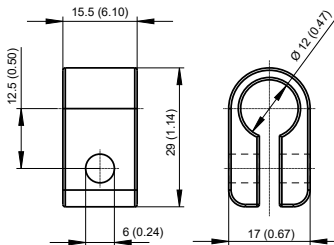
Suitable for

- All probes with diameter 12 mm (0.47")

Order code

HA010211

Dimensions in mm (inch)



Features

- Temperature range: -40...+60 °C (-40...+140 °F)
- Material: LDPE (Polyethylene)

Wall Mounting Clip Ø25 mm (0.98")



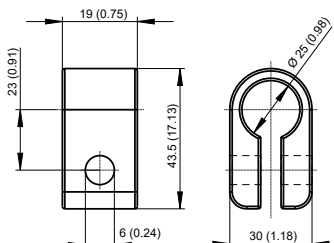
Suitable for

- EE260
- EE872

Order code

HA010227

Dimensions in mm (inch)



Features

- Temperature range: -40...+60 °C (-40...+140 °F)
- Material: LDPE (Polyethylene)

Stainless Steel Wall Mounting Clip Ø12 mm



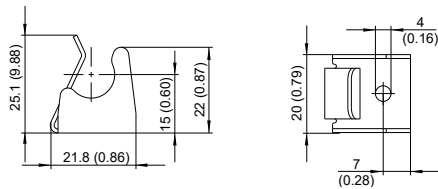
Suitable for

- All probes with diameter 12 mm (0.47")

Order code

HA010225

Dimensions in mm (inch)



Features

- Material: Stainless steel 1.4404

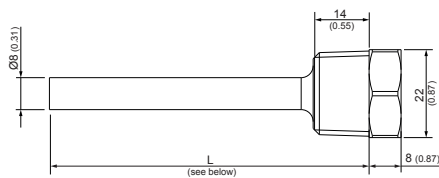
Immersion Well



Suitable for

- EE074
- EE431
- EE461
- EE462
- EE471
- HTS801-T17 (only HA400202, HA400212)

Dimensions in mm (inch)



Length (L)	Material	Order code	
		R½" ISO	½" NPT
50 mm (1.97")	Brass	HA400101	HA400111
	Stainless steel	HA400201	HA400211
100 mm (3.94")	Brass	HA400104	HA400114
	Stainless steel	HA400204	HA400214
135 mm (1.97")	Brass	HA400102	HA400112
	Stainless steel	HA400202	HA400212
285 mm (11.22")	Brass	HA400103	HA400113
	Stainless steel	HA400203	HA400213

LC Displays

LC Display and Cover for Retrofitting / Spare Part



Suitable for	Material	Order code
EE23	AlSi9Cu3 (Aluminium die-cast)	D03M-EE23
	PC (Polycarbonate)	D03P-EE23
EE23-T5	AlSi9Cu3	D05M-EE23T5
	PC	D05P-EE23T5
EE220	AlSi9Cu3	D07M-EE220
	PC	D07P-EE220
EE244	PC	D07W-EE244
EE371	AlSi9Cu3	D08M-EE371
EE381	AlSi9Cu3	D08M-EE381
Sigma 05	PC	D09P-Sigma05

Power Supply Unit

Power Supply Adapter



Suitable for

- All E+E devices with 24 V DC supply
max: 0.625 A
- Europe / US / UK / Korea / China

Order code

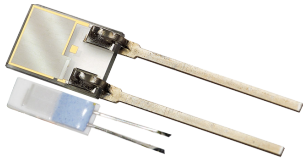
V03

Description

- External power supply
- 100-240 V AC / 50-60 Hz 0.5 A

Replacement Sensing Elements

Sensing Elements for Humidity and Temperature



Suitable for	Description	Order code
▪ EE23	Replacement humidity sensing element	FE09
▪ EE310	Replacement humidity sensing element with proprietary coating	FE09-HC01
	Replacement temperature sensing element	TE38

Sampling Cells

Basic Sampling Cell



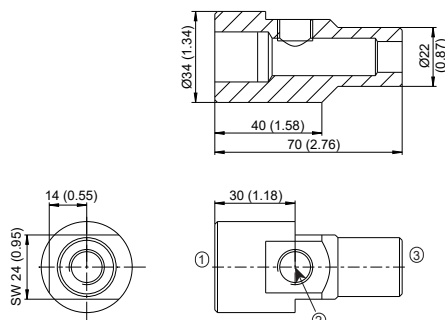
Suitable for

- EE354
- EE355
- EE371

Order code

- HA050103**
(ISO)
- HA050105**
(NPT)

Dimensions in mm (inch)



Description

- The basic sampling cell is designed for a pressure range 0...64 bar (0...928 psi). It allows a simple integration of a dew point sensor into a self constructed sampling system.

ISO	NPT
1 = G 1/2"	1/2"
2 = G 1/4"	1/4"
3 = G 1/4"	1/4"

ISO Sampling Cell



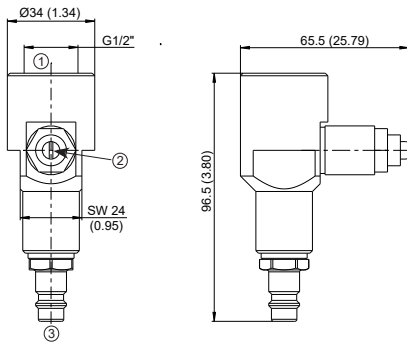
Suitable for

- EE354
- EE355
- EE371

Order code

HA050102

Dimensions in mm (inch)



- 1 = G1/2"
- 2 = Bleed screw
- 3 = Quick connector DN7.2

Description

- The sampling cell is optimized for compressed air lines with pressure range 0...10 bar (0...145 psi). The flow of air can be adjusted with the bleed screw. The G1/2" ISO version features a quick connector suitable for standard DN7.2 air connection, which allows for the sampling cell to be mounted and removed without process interruption.

NPT Sampling Cell



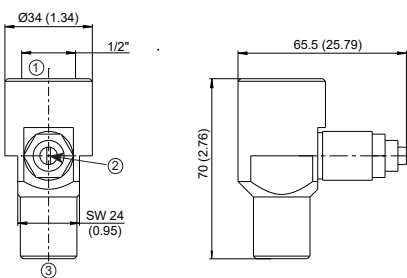
Suitable for

- EE354
- EE355
- EE371

Order code

HA050107

Dimensions in mm (inch)



- 1 = G1/2"
- 2 = Bleed screw
- 3 = Quick connector DN7.2

Description

- The sampling cell is optimized for compressed air pipes with pressure range 0...10 bar (0...145 psi). The flow of air can be adjusted with the bleed screw.

Sampling Cell for Atmospheric Dew Point



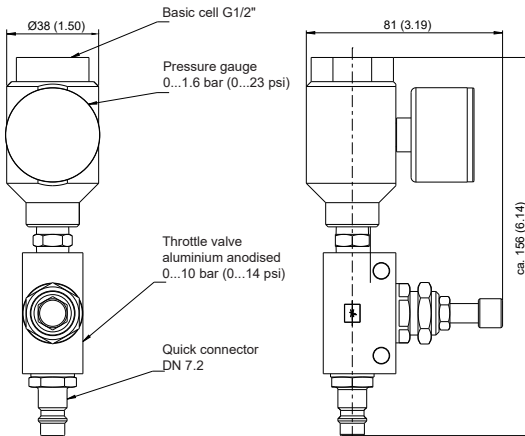
Suitable for

- EE354
- EE355
- EE371

Order code

HA050106

Dimensions in mm (inch)



Description

- The sampling cell is optimized for measuring the atmospheric dew point temperature in compressed air lines with pressure range 0...10 bar (0...145 psi). It features a quick connector suitable for standard DN7.2 air connection, which allows for the sampling cell to be mounted and removed without process interruption. The pressure in the sampling cell could be zeroed by the needle valve.

Ball Valve G 1/2" ISO



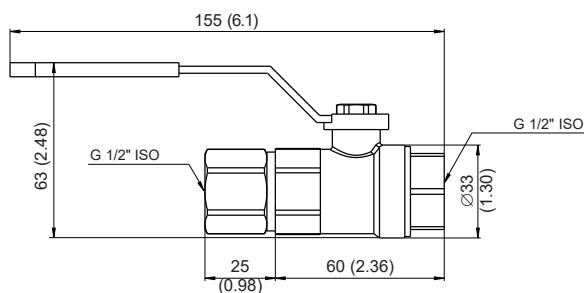
Suitable for

- MOP301-T10

Order code

HA050101

Dimensions in mm (inch)



Ball Valve 1/2" NPT



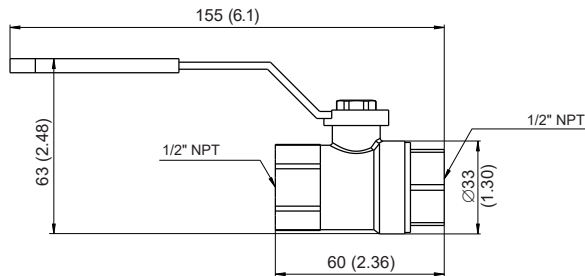
Suitable for

- MOP301-T10

Order code

HA050104

Dimensions in mm (inch)



Drip Water Protection

In applications with high humidity and condensation or for outdoor use, sensor probes should be protected against dripping water.

Drip Water Protection



Suitable for

- All probes with diameter 12 mm (0.47")

Order code

HA010503

Description

- Protection cap diameter 85 mm (3.35"), fixing onto the sensing probe by cable gland.

Protection Caps

Protection Cap for 12 mm (0.47") Probes



Suitable for

- All probes with diameter 12 mm (0.47")

Order code

HA010783

Description

- Sensing head protection during site cleaning and sterilization
- Temperature range: -40...+80 °C (-40...+176 °F)
- Length: 50.4 mm (1.98")
- Diameter: 12.5 mm (0.49")

Protection Cap



Suitable for

- M12 socket

Order code

HA010781

Protection Cap



Suitable for

- M12 plug

Order code

HA010782

Radiation Shields

For outdoor applications the measuring probes shall be equipped with a radiation shield which provides protection from rain, snow and ice. This causes also a natural ventilation which largely prevents overheating of the sensing probe in the sun and thus a distortion of the measured values. All E+E radiation shields are suitable for wall and pole mount.

Radiation Shields for Probes with Diameter 12 mm (0.47")

With supporting plate



Suitable for

- EE210-T13
- EE212-T13

Order code

HA010501

With fixed clamping ring (M20x1.5)



Suitable for probes with Ø12 mm (0.47")

- EE07
- EE08-E8
- EE060
- EE061
- EE072
- HTP201
- HTS801-T17 (RH probe)

Suitable for remote sensing probes

- EE23
- EE210
- EE310

Order code

HA010502

With screw-in thread (M16x1.5) and additional cable gland for probes with Ø6 mm (0.24")



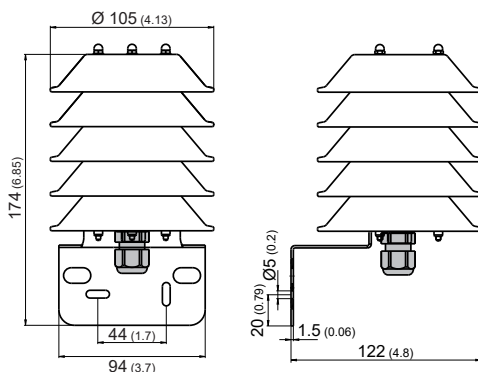
Suitable for

- EE08-E11
- HTS801-T17 (T probe)

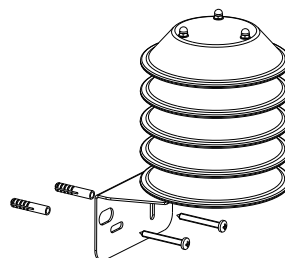
Order code

HA010506

Dimensions in mm (inch)

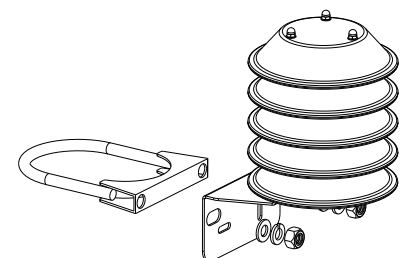


Wall mount



Pole mount

34 - 68 mm (1.3 - 2.7")



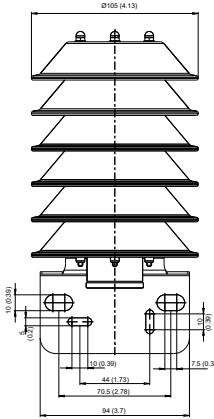
Radiation Shield for EE872

Suitable for
▪ EE872

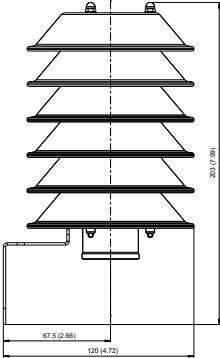
Order code
HA010510



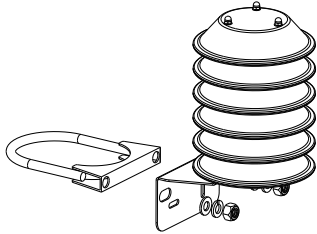
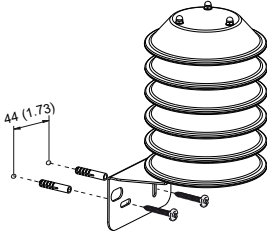
Dimensions in mm (inch)



Wall mount



Pole mount
34 - 68 mm (1.3 - 2.7")



Radiation Shield with Artificial Ventilation for EE260

Suitable for

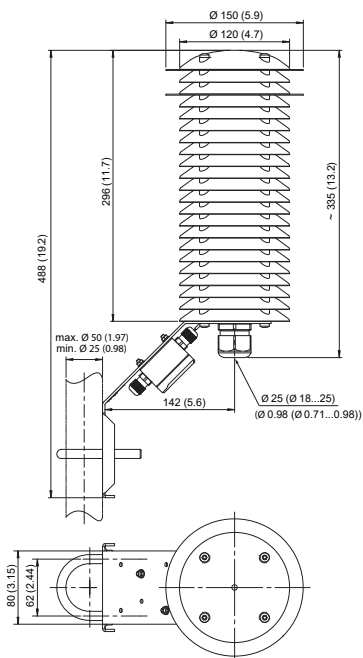
- EE260

Order code

HA010511

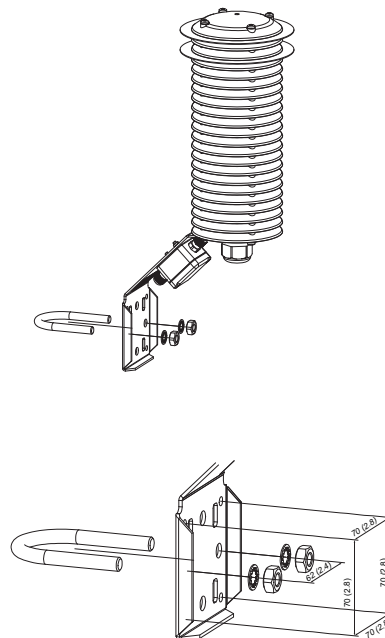


Dimensions in mm (inch)



Pole mount

34 - 68 mm (1.3 - 2.7")



Power Supply

External power supply for ventilator is required.

- Supply voltage: 9.5...13.2 V DC
- Power consumption: 1.4 W (max. 1.8 W)

Radiation Shield with Artificial Ventilation for EE33-M



Suitable for

- HTS801-T28

Order code

HA010508

Power Supply

External power supply for ventilator is required.

- Supply voltage: 9.5...13.2 V DC
- Power consumption: 1.4 W (max. 1.8 W)

Mounting and Connection Elements

Bracket for DIN Rail Mounting



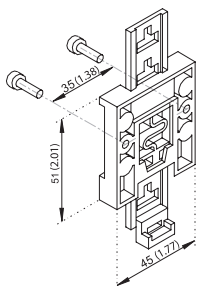
Suitable for (polycarbonate enclosure only)

- EE23
- EE220
- EE310
- EE360
- HTS801

Order code

HA010203

Dimensions in mm (inch)



Hose Clamp Bundle, Metal 330 mm (13")



Suitable for

- EE461
- EE462
- EE471

Bestellcode

HA402102

Dimension in mm (inch)

- Length: 330 (13)



Description

- Material: DX 52 D+Z 275 MA (Sendzimir galvanised)
- Material caps, inner part and screws: ST 12 blue galvanised (galvanised steel)
- 1 packaging unit: 5 pieces

Conduit Adapter, Stainless Steel



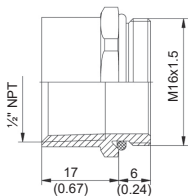
Suitable for

- Devices with cable gland M16x1.5

Order code

HA011101

Dimension in mm (inch)



Description

- Adapter M16x1.5 auf 1/2" NPT (US conduit fitting)

Conduit Adapter, Plastic



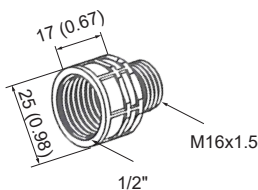
Suitable for

- Devices with cable gland M16x1.5

Order code

HA011110

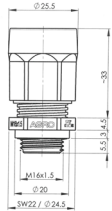
Dimensions in mm (inch)



Description

- Adapter M16x1.5 to 1/2" NPT (US conduit fitting)

Sealing Plug Conduit Adapter M16x1,5, Plastic



Suitable for

- Devices with cable gland M16x1.5

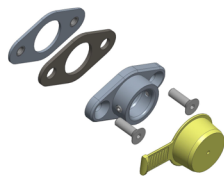
Order code

HA011113

Description

- With Anschlusskabelabdichtung
- RAL7035 UL
- Material: PA6 CR

Mounting Set for EE680



Suitable for

- EE680

Order code

HA011601

Description

- Sheet metal wall mounting set for EE680 consisting of:
 - Counter plate
 - Sealing gasket
 - Two screws M5x16

Sealing Plug M12, Stainless Steel



Suitable for

- EE680

Order code

HA011602

Description

- Stainless steel M12 sealing plug to protect the electrical connection in case of site cleaning where it is necessary to remove EE680.

Pressure Tight Feedthrough



Suitable for	Description	Order code
<ul style="list-style-type: none"> ▪ HTS801-M1T17 ▪ HTS801-M4T7 	<ul style="list-style-type: none"> ▪ For probes with diameter 12 mm (0.47"), probe assembly up to 20 bar (300 psi) 	<p>HA011102 (1/2" ISO)</p> <p>HA011103 (1/2" NPT)</p>
	<ul style="list-style-type: none"> ▪ For probes with diameter 6 mm (0.24"), probe assembly up to 20 bar (300 psi) 	<p>HA011104 (1/2" ISO)</p> <p>HA011105 (1/2" NPT)</p>

Pressure Connection Set



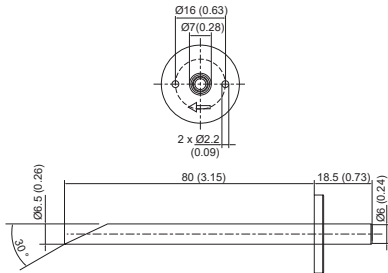
Suitable for

- EE600
- EE610

Order code

HA011304

Dimensions in mm (inch)



Description

- 2 m (78.7") PVC hose with two ABS pressure connection nipples

Reference Probes

Reference Probe



Suitable for

- EE220
- EE244

Order code

HA010403

Description

- EE07 probes with fix output values for checking the EE220 basic unit and the EE244 transmitter/router (test report included):
 - Probe 1: 90 %RH/5 °C (41 °F)
 - Probe 2: 10 %RH/45 °C (113 °F)

Reference Probe Modbus RTU



Suitable for

- Sigma 05

Order code

HA010406

Description

- Probe with fix output values for checking the Sigma 05
- Fix values freely configurable via PCS10 (available at www.epluse.com/pcs10) and configuration adapter HA011018

Interface Cables

RS232 Interface Cable



Suitable for

- EE371
- EE381

Order code

HA010304

Description

- RS232 interface cable:
 - PC side: DB9 socket for RS232 COM port
 - Sensor side: 6 poles wire to board connector
- Cable length: 2 m (6.6 ft)

RS232 to E2



Suitable for

- EE07

Order code

HA011001

Description

- RS232 to E2 converter:
 - PC side: DB9 socket for RS232 COM port
 - EE07 side: M12 socket, 4 poles
- Cable length: 2 m (6.6 ft)

RS232 to E2



Suitable for

- EE03

Order code

HA011002

Description

- RS232 to E2 converter:
 - PC side: DB9 socket for RS232 COM port
 - EE03 side: 4 poles wire to board connector
- Cable length: 2 m (6.6 ft)

RS232 to E2**Suitable for**

- EE08

Order code**HA011005****Description**

- RS232 to E2 interface adapter for EE08 adjustment and test
 - Connections:
 - PC side: DB9 socket for RS232 COM port
 - EE08 side:
 - For EE08-E8 (cable version): screw terminals
 - For EE08-E11 (connector version): cable 2 m (6.6 ft) with M12 socket
 - External power supply is required (power adapter not in the scope of supply)
See EE08 datasheet at www.epluse.com/ee08 for the correct power supply voltage according to the EE08 model.
-

USB to RS232**Suitable for**

- E+E devices with RS232 interface

Order code**HA020110****Description**

- High speed converter from USB to RS232 DB9 (plug)
 - Microsoft WHQL approved
-

Converters and Configuration Adapters

Modbus Configuration Adapter



Suitable for	Order code
<ul style="list-style-type: none"> ▪ EE354 ▪ EE355 ▪ EE364 	HA011013
<ul style="list-style-type: none"> ▪ EE072 ▪ EE074 ▪ EE260 (with configuration cable HA011020) ▪ EE671-T15 ▪ EE680 ▪ EE872 ▪ HTP501 ▪ MOP301 ▪ HA010406 	HA011018

Description

- For test and configuration including power supply adapter:
 - PC side: USB stick
 - Sensor side: M12 socket, 4 poles

USB Configuration Adapter

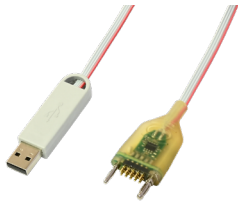


Suitable for	Order code
<ul style="list-style-type: none"> ▪ EE210 ▪ EE210-T13 ▪ EE211 ▪ EE212 ▪ EE650 ▪ EE660 ▪ EE800 ▪ EE820 ▪ EE850 <ul style="list-style-type: none"> ▪ EE10 digital ▪ EE160 digital ▪ EE4x1 digital ▪ EE600 analogue with auto-zero ▪ EE600 digital ▪ EE610 analogue with auto-zero ▪ EE610 digital ▪ CDS201 digital ▪ HTS201 digital ▪ TES201 digital 	HA011066

Description

- For test and configuration including power supply adapter:
 - PC side: USB stick
 - Sensor side: 10 poles wire to board connector

USB Configuration Adapter



Suitable for	Order code
<ul style="list-style-type: none"> ▪ EE431 with display ▪ EE451 with display 	HA011023

Description

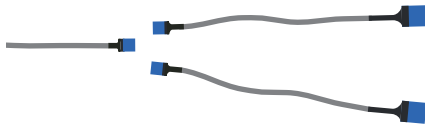
- For test and configuration:
 - PC side: USB stick
 - Sensor side: 10 poles wire to board connector

EE-PCA Product Configuration Adapter



Suitable for	Order code
<ul style="list-style-type: none"> ▪ See EE-PCA datasheet https://www.epluse.com/fileadmin/data/product/eepca/datasheet_EE-PCA.pdf	EE-PCA

USB Configuration Adapter for EE160-MxTxAx (Analogue)



Suitable for	Order code
<ul style="list-style-type: none"> ▪ EE160 analogue (please refer to user manual to discover the right version of EE160 which can be configured by using this USB configuration adapter) 	HA011069

Description

- For test and configuration including power supply adapter:
 - PC side: USB stick
 - Sensor side: 10 poles wire to board connector with adapters for voltage and current version

Configuration Cable for EE260

Suitable for	Order code
<ul style="list-style-type: none"> ▪ EE260 	HA011020

Description

- For test and configuration of EE260 in combination with Modbus configuration adapter HA011018
 - HA011018 side: M12 plug 4 poles
 - EE260 side: M12 socket 8 poles

CAN Configuration Adapter for EE072 (CAN Version)

Suitable for

- EE072 (CAN version)

Order code

HA011021

Description

- For test and configuration including power supply adapter:
 - PC side: USB stick
 - Sensor side: M12 socket 5 poles

Connection Cable for EE072 (CAN Version)

Suitable for

- EE072 (CAN version)

Order code

HA010850

Description

- M12 socket 5 poles (with embedded 120 Ω termination resistor, yellow connector): EE072 side
- M12 plug 5 poles (black connector): other devices
- Length 1.8 m (5.9 ft), colour cable violet

EE895 Evaluation Board



Suitable for

- EE895

Order code

HA011019

Description

- Further information available at datasheet EE895 Eval Board.

https://www.epluse.com/fileadmin/data/product/ha011019/datasheet_EE895_Evaluation_Board_HA011019.pdf

HTE501 Evaluation Kit



Suitable for

- HTE501

Order code

HTE501 Eval Kit 1.0

Description

- Further information available at datasheet HTE501 Eval Kit 1.0.

https://www.epluse.com/fileadmin/data/product/evalkit/datasheet_EvalKit_HTE501.pdf

TEE501 Evaluation Kit



Suitable for

- TEE501

Order code

TEE501 Eval
Kit 1.0

Description

- Further information available at datasheet
TEE501 Eval Kit 1.0.

https://www.epluse.com/fileadmin/data/product/evalkit/datasheet_EvalKit_TEE501.pdf

Y-style splitter M12 - M12



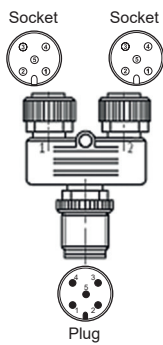
Suitable for

- All sensors and cables with M12, 4/5 poles

Order code

HA030204

Connectors

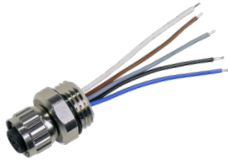


Description

- M12 splitter, 1 plug ↔ 2 sockets for M12, 5 poles

Connectors

Flange Coupling Socket, 5 Poles



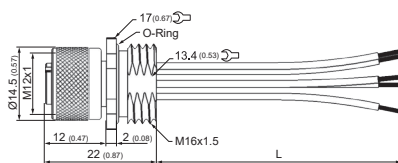
Suitable for

- All probes with M12 plug 4/5 poles

Order code

HA010705

Dimensions in mm (inch)

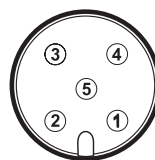


- L = 50 (2) ±3 (0.12)

Description

- M12x1 flange coupling with flying leads

Connection diagram



M12 socket
front view

Pin	Colour
1	brown
2	white
3	blue
4	black
5	grey

Flange Coupling Socket, 8 Poles



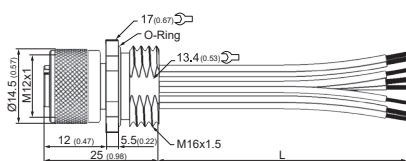
Suitable for

- All probes with M12 plug 8 poles

Order code

HA010703

Dimensions in mm (inch)

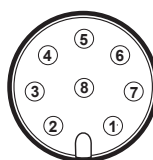


- L = 200 mm (2") ±5 mm

Description

- M12x1 flange coupling with flying leads.

Connection diagram



M12 socket
front view

Pin	Colour
1	white
2	brown
3	green
4	yellow
5	grey
6	pink
7	blue
8	red

Connector, 4 Poles Socket



Suitable for

- All sensors with M12 plug 4 poles

Order code

HA010707

Description

- M12x1 cable connector, 4 poles, IP67 (NEMA 4), for self assembly.

Connector, 5 Poles Socket



Suitable for

- All sensors with M12 plug 5 poles

Order code

HA010708

Description

- M12x1 cable connector, 5 poles, IP67 (NEMA 4), for self assembly

Connector, 8 Poles Socket

Suitable for

- All sensors with M12 plug 8 poles

Order code

HA010704

Description

- M12x1 cable connector, 8 poles, IP67 (NEMA 4), for self assembly

Connector, 5 Poles Plug



Suitable for

- All sensors with M12 socket 5 poles

Order code

HA010706

Description

- M12x1 cable connector, 5 poles, IP67 (NEMA 4), for self assembly.

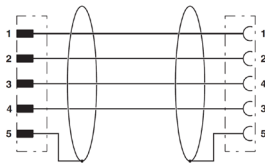
Connection Cables

Connection Cable Shielded Plug/Socket M12x1, 5 Poles



Suitable for	Order code
▪ EE07 with EE220	HA010801 (2 m / 6.6 ft)
▪ EE07 with EE244	HA010802 (5 m / 16.4 ft)
▪ EE244	HA010803 (10 m / 16.4 ft)

Connection diagram



Description

- 5 poles, M12x1 plug ↔ socket, shielded (shield connected to pin 5), PUR (Polyurethane)

Feature

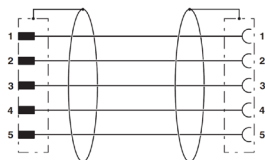
- Temperature range: -40...+80 °C (-40...+176 °F)

Connection Cable Shielded Plug/Socket M12x1, 5 Poles



Suitable for	Order code
▪ EE771	HA010816 (2 m / 6.6 ft)
▪ EE772	HA010817 (5 m / 16.4 ft)
▪ EE776	HA010818 (10 m / 16.4 ft)

Connection diagram



Description

- 5 poles, M12x1 plug ↔ socket, shielded, PUR (Polyurethane)

Feature

- Temperature range: -40...+80 °C (-40...+176 °F)

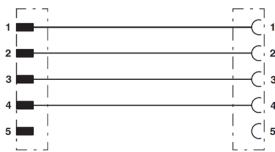
Connection Cable Unshielded Plug / Socket, M12x1, 4/5 Poles



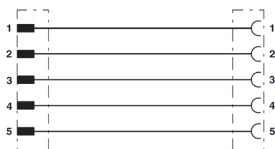
Suitable for	Description	Order code
<ul style="list-style-type: none"> EE100Ex-T23 	<ul style="list-style-type: none"> M12 connecting cable, 4 poles, M12x1 plug ↔ socket, unshielded, PUR (Polyurethane) 	<p>HA010826 (2 m / 6.6 ft)</p>
<ul style="list-style-type: none"> Oilport 30 Omniport 30 Sigma 05 	<ul style="list-style-type: none"> M12 connecting cable, 5 poles, M12x1 plug ↔ socket, unshielded, PUR (Polyurethane) 	<p>HA010813 (2 m / 6.6 ft)</p> <p>HA010814 (5 m / 16.4 ft)</p> <p>HA010815 (10 m / 32.8 ft)</p>

Connection diagram

HA010826



HA010813



Feature

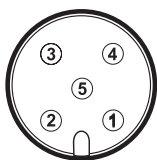
- Temperature range: -25...+85 °C (-13...+185 °F)

Connection Cable M12x1 Socket 5 Poles / Free Cable Ends



Suitable for	Order code
<ul style="list-style-type: none"> All sensors with M12 plug, 4/5 poles 	<p>HA010819 (1.5 m / 4.9 ft)</p> <p>HA010820 (5 m / 16.4 ft)</p> <p>HA010821 (10 m / 32.8 ft)</p>

Connection diagram



M12 socket front view

Pin	Colour
1	brown
2	white
3	blue
4	black
5	grey

Description

- 5 poles, M12x1 socket ↔ free cable ends, shielded, PUR (Polyurethane)

Feature

- Temperature range: -40...+80 °C (-40...+176 °F)

Connection Cable Socket 4 Poles/Free Cable Ends , Angled 90°

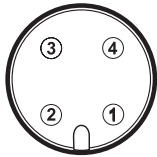
Suitable for

- All sensors with M12 plug, 4 poles

Order code

HA010824
(2 m/6.6 ft)

Connection diagram



M12 socket
front view

Pin	Colour
1	brown
2	white
3	blue
4	black

Description

- 4 poles, M12x1 socket, angled 90°

Feature

- Temperature range: -40...+80 °C (-40...+176 °F)

Connection Cable Socket 8 Poles/Free Cable Ends



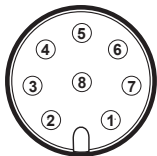
Suitable for

- All sensors with M12 plug 8 poles

Order code

HA010322
(1.5 m/4.9 ft)
HA010323
(3 m/9.8 ft)
HA010324
(5 m 16.4 ft)
HA010325
(10 m/32.8 ft)

Connection diagram



M12 socket
front view

Pin	Colour
1	white
2	brown
3	green
4	yellow
5	grey
6	pink
7	blue
8	red

Description

- 8 poles, M12x1 socket ↔ free cable ends, shielded, PUR (Polyurethane)

Feature

- Temperature range: -40...+80 °C (-40...+176 °F)

Sensor Connecting Cable, Socket 5 Poles/Free Cable Ends with Ferrules



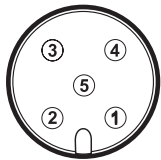
Suitable for

- EE671

Order code

- **HA010831**
(0.5 m / 1.64 ft)
- **HA010832**
(2 m / 6.56 ft)

Connection diagram



M12 socket
front view

Pin	Colour
1	grey
2	brown
3	green
4	yellow
5	white

Description

- 5 poles, M12x1 socket ↔ free cable ends with ferrules, PVC (Polyvinylchloride)

Feature

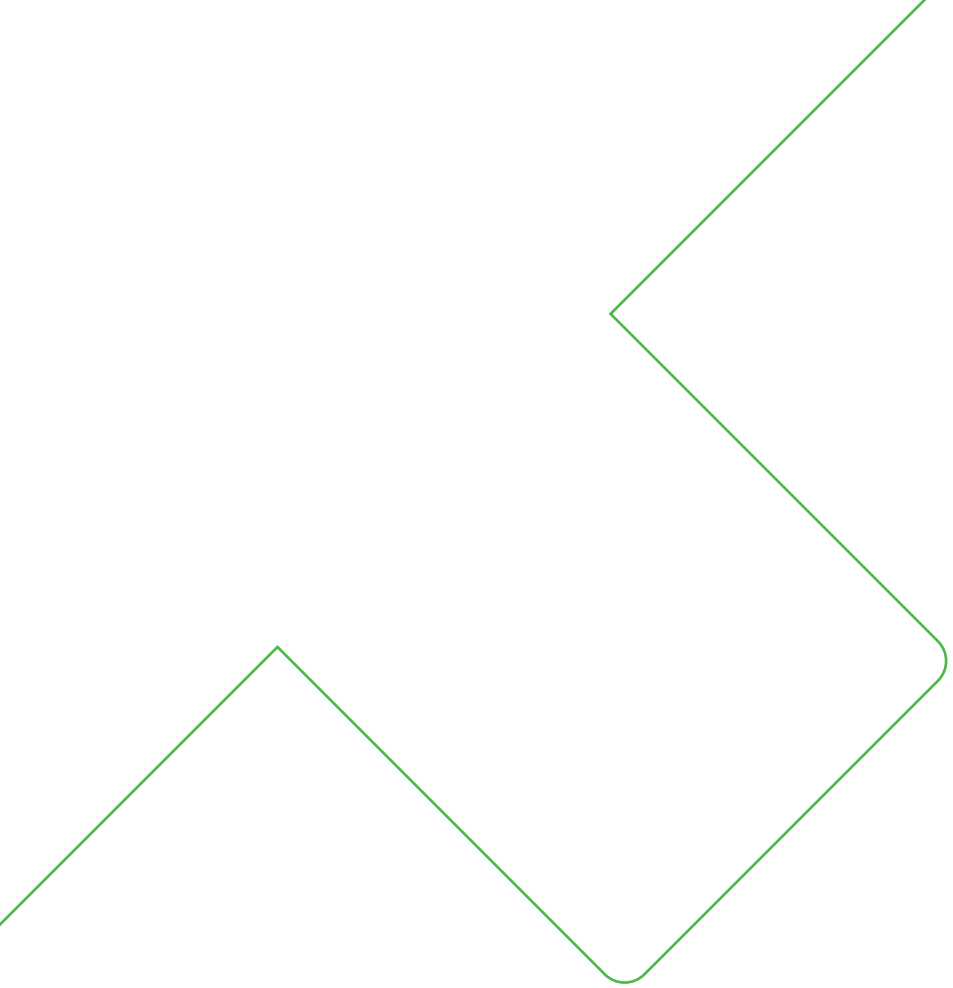
- Temperature range moving:
-25...+70 °C (-13...+158 °F)
- Temperature range not moving:
-40...+80 °C (-40...+176 °F)

USB-C to USB-A Cable

Suitable for	Description	Order code
<ul style="list-style-type: none"> ▪ Sigma 05 ▪ HTS801 	<ul style="list-style-type: none"> ▪ Connections: <ul style="list-style-type: none"> ▪ PC side: USB-A ▪ Sensor side: USB-C ▪ Length 1.8 m (5.9 ft) 	HA010327

Ethernet Cable, PC to Base Station EE242

Suitable for	Description	Order code
<ul style="list-style-type: none"> ▪ Any sensor with ethernet interface 	<ul style="list-style-type: none"> ▪ Connections: 2 RJ45 plugs 	
	<ul style="list-style-type: none"> ▪ Crossover cable 1.5 m (4.9 ft) 	HA010333
	<ul style="list-style-type: none"> ▪ Standard cable 1.8 m (5.9 ft) 	HA010335



Company Headquarters &
Production Site

E+E Elektronik Ges.m.b.H.
Langwiesen 7
4209 Engerwitzdorf | Austria
T +43 7235 605-0
F +43 7235 605-8
info@epluse.com
www.epluse.com

Subsidiaries

E+E Sensor Technology (Shanghai) Co., Ltd.
T +86 21 6117 6129
info@epluse.cn

E+E Elektronik France SARL
T +33 4 74 72 35 82
info.fr@epluse.com

E+E Elektronik Deutschland GmbH
T +49 6171 69411-0
info.de@epluse.com

E+E Elektronik India Private Limited
T +91 990 440 5400
info.in@epluse.com

E+E Elektronik Italia S.R.L.
T +39 02 2707 86 36
info.it@epluse.com

E+E Elektronik Korea Ltd.
T +82 31 732 6050
info.kr@epluse.com

E+E Elektronik Corporation
T +1 847 490 0520
info.us@epluse.com

Version v2.6 | 10-2023
Modification rights reserved



—
your partner
in sensor
technology.

www.epluse.com